

TFS230 FLOOR STRIPPER

OPERATION AND MAINTENANCE MANUAL



CONTENTS

Introduction	2
Declaration of Conformity.....	3
General Information	6
Safety	6
Risk of Hand-Arm Vibration Injury	7
Assembly Instructions	7
Pre Start Checks (Daily).....	8
Starting - Electric Motors	8
Handle Adjustment	9
Blade Replacement	9
Blade Angle Adjustment.....	10
PPE and Warning Hazard Symbols Explanation	10
Machine Operation	11
Maintenance and Machine Storage.....	11
Exploded View	12
Wiring Diagrams	13
Parts List TFS230	14
Technical Specification.....	15
Trouble Shooting.....	15
Notes	16

INTRODUCTION

Your new Trelawny SPT power tool will more than satisfy your expectations. It has been manufactured under stringent Trelawny SPT Quality Standards to meet superior performance criteria. You will find your new tool easy and safe to operate, and, with proper care, it will give you many years of dependable service.



WARNING

Carefully read through these original instructions before using your new TRELAWNY power tool. Take special care to read the warnings. Your TRELAWNY power tool has many features that will make your job faster and easier. Safety, performance, and dependability have been given top priority in the development of this tool, making it easy to maintain and operate.



ENVIRONMENTAL PROTECTION

The machine, accessories and packaging should be sorted for environmentally friendly recycling. The plastic components are labelled for categorised recycling.



DISPOSAL

Waste products should not be disposed of with household waste. Please recycle where facilities exist. Check with your local authority or retailer for recycling advice.



DECLARATION OF CONFORMITY

We,
Trelawny SPT Limited of
Trelawny SPT Ltd, CO. Indutrade Benelux BV, Anton Philipsweg 1, 1422 AL Uithoorn,
Netherlands

Declare that under our sole responsibility for supply/manufacture of the product

Name of product

Model, Serial Number

Year of production

to which this document relates is in conformity with the provisions of the following
Directives(s), Normative Documents and their relevant Standards:

2006/42/EC

The Machinery Directive

2011/65/EU

The Restriction of Hazardous Substances Directive

2014/35/EU

Low Voltage Directive

EN ISO 12100 / 2010

EN ISO 20643:2008+A1:2012

EN ISO 4871:2009

EN 60204-1:2018

Year and place of issue,
2023
Leamington Spa, England

Adam Dickinson
Managing Director



DOC. Q56A/1



DECLARATION OF CONFORMITY

We,
Trelawny SPT Limited of
Trelawny House, 13 Highdown Road, Sydenham Industrial Estate, Leamington Spa,
Warwickshire, CV311XT, United Kingdom

Declare that under our sole responsibility for supply/manufacture of the product

Name of product

Model, Serial Number

Year of production

to which this document relates is in conformity with the provisions of the following
Directive(s), Normative Documents and their relevant Standards:

2006/42/EC	The Machinery Directive
2011/65/EU	The Restriction of Hazardous Substances Directive
2014/35/EU	Low Voltage Directive
EN ISO 12100 / 2010	EN ISO 20643:2008+A1:2012
EN ISO 4871:2009	EN 60204-1:2018

Year and place of issue,
2023
Leamington Spa, England



Adam Dickinson
Managing Director

DOC. Q56B/1

DECLARATION OF CONFORMITY

<p>CZ Prohlášení o přizpůsobení My, společnost Trelawny SPT Limited podávame daňové priznání. Že výrobek a dodávka výrobku název výrobku Model, výrobní číslo Rok výroby Pro které se průkaz týká, je přizpůsobení s zásobou od následující příkazov a jejich pohotovosti: 98/37/EC Příkaz soustrojí 73/23/EC Příkaz nízkého napětí (upotřebitelné jediné do výrobku použít elektrické energie)</p>	<p>LT ATTIKTIKES DEKLARACIJA Mes, Trelawny SPT Limite Prisiimdami visą atsakomybę deklaruojame, kad tiekiamas / gaminamas produktas Produkto pavadinimas Modelis, serijos numeris Pagaminimo Kuriam taikoma ši deklaracija, atitinka šių direktyvų, norminių aktų ir su jais susijusių standartų reikalavimus: 98/37/EC Įrangos direktyva 73/23/EC Žemos įtampos direktyva (taikoma tik elektriniams įrenginiams)</p>
<p>DE Übereinstimmungserklärung Wir, Trelawny SPT Limited erklären, dass unter unserer alleinigen Verantwortung für die Lieferung und Herstellung des Produktes Name des Produktes Model, Seriennummer Jahr der Herstellung auf welches sich dieses Dokument bezieht, stimmt mit den Vorgaben der folgenden Direktive, normativen Dokumente und deren jeweiligen Masstabe ein: 98/37/EC Maschinenrichtlinie 73/23/EC Niederspannungsrichtlinie (nur zutreffend auf Produkte, die Strom benutzen)</p>	<p>MT DIKJARAZZJONI TA KONFORMITA Ahna, Trelawny SPT Limited Niddikjaraw li ahna responsabbli kompletament għal provista / manifattura tal-prodott hawn 1msemmi: Isem il-Prodott Mudell, Serial number Sena la 'produzzjoni Dan id-dokument magħmul għal prodott insemmi hawn fuq, li huwa skond il-provizjonijiet insemmija fid-dokumenti tal-klassi tax-xogħol: 98/37/EC Machinery Directive 73/23/EC Low Voltage Directive (tapplika biss għal prodott li jaħdmu bi-elektriu)</p>
<p>DK Erklæring om overensstemmelse Vi, Trelawny SPT Limited Erklærer hermed at under vores ene forhandling ansvar for vores forhandling/produktion af produktet Produkt navn Model, serie nummer Produktionsår For hvilket dette dokument referer, at deler i overensstemmelse med bestemmelser af følgende direktiver, normative dokumenter og deres relevante standard: 98/37/EC Machinery directive 73/23/EC Low voltage directive</p>	<p>NL EENVORMIGHEIDSVERKLARING Wij, Trelawny SPT Limited Verklaren dat wij de volledige verantwoordelijkheid dragen voor het leveren/fabriceren van het volgende product: Naam van het product Type, Serienummer Productiejaar En verklaren dat het product waarnaar dit document verwijst eenvormig is met de voorzieningen van de volgende Richtlijn(en), Normatieve Documenten en hun relevante Standaarden: 98/37/EC MACHINERIECHTLIN 73/23/EC LAAGSPANNINGSRICHTLUN (uitsluitend van toepassing bij producten die elektrische stroom gebruiken)</p>
<p>EE TOOTE VASTAVUSE DEKLARATSIOON Meie, Trelawny SPT Limited Deklareerime, et vastutame järgmise varustuse/toote müügi eest Toote nimetus Mudel, Seeria number Aasta toodangu Antud dokument loendab toote vastavust järgmistele direktiivide(de)le, normatiividele ja nendega samaväärsetele standarditele: 98/37/EC MASINA DIREKTIIVID 73/23/EC MADALPINGE DIREKTIIVID (Kohandatakse vaid toodetele, mis kasutavad elektrivoolu)</p>	<p>PL Deklaracja Zgodności My, Firma Trelawny SPT Limited, oświadczamy w naszej odpowiedzialności, że produkcja i dostawa urzadzzenia Nazwa produktu Model, numer seryjny Rok produkcji Do którego ten dokument należy, jest zgodne z klauzulami następujących zarządzeń i ich istotnych standardów: 98/37/EC Zarządzenie mechaniczne 73/23/EC Zarządzenie niskiego napięcia elektrycznego (Zastosowanie tylko przy urządzeniach elektrycznych)</p>
<p>ES Declaración de Conformidad Nosotros, Trelawny SPT Limited Declaramos que bajo nuestra completa responsabilidad de la fabricación/suministro del producto Nombre del Producto Modelo, No de Serie Año de producción A quién este documento se refiere, está de acuerdo con lo relacionado en la Directriz, Normativa Documentada y sus relevantes standards: 98/37/EC Directorio de Maquinaria 73/23/EC Directorio de Bajo Voltaje (Aplicable solamente a productos que funcionen con electricidad)</p>	<p>PT DECLARAÇÃO DE CONFORMIDADE CE A empresa TRELAWNY SPT LIMITED Declara, sob sua inteira responsabilidade, que o fornecimento/fabrico do seguinte produto: Designação do produto Modelo, Número de Série Ano de produção a que esta declaração se refere, está em conformidade com o preceituado nas Directivas e Normas Comunitárias abaixo indicadas: 98/37/EC DIRECTIVA DE MÁQUINAS 73/23/EC DIRECTIVA DE BAIXA VOLTAGEM (Aplicável apenas a produtos que utilizam energia eléctrica)</p>
<p>FI ILMOITUSVAHVISTUS Me, Trelawny SPT Limited Vahvistamme tuotteiden toimittamisesta/valmistamisesta Tuotenimi Malli, sarjanumero Valmistusvuosi Tällä todistuksella vahvistamme säädökset seuraviin ohje/ohjesiin, Yleisiin papereihin ja niihin liittyvät vaatimukset: 98/37/EC KONEISTON OHJEET 73/23/EC PIENJÄNNITTE OHJEET (tarvitaan ainoastaan tuotteille jotka käyttävät sähkövoimaa)</p>	<p>RU СВИДЕТЕЛЬСТВО О СООТВЕТСТВИИ Мы, Trelawny SPT Limited Зявляем, что несем полную ответственность за поставку/производство нижеуказанной продукции Наименование изделия Модель, серийный номер Год выпуска на которую выдано настоящее Свидетельство, и которая соответствует положениям следующей(их) директив(ы), нормативным документам и относящимся к ним стандартам: 98/37/EC ДИРЕКТИВА ПО МЕХАНИЗМАМ 73/23/EC ДИРЕКТИВА ПО НИЗКОВОЛЬТНОМУ ОБОРУДОВАНИЮ (распространяется только на изделия с электропитанием)</p>
<p>FR DÉCLARATION DE CONFORMITÉ Nous, soussignés Trelawny SPT Limited déclarons que le produit sous-nommé Nom du produit Modèle et Numéro de Série Année de production et pour lequel nous prenons entière responsabilité pour sa fourniture et manufacture, est conforme aux clauses des directives suivantes documents normatifs et normes qui s'y appliquent: 98/37/EC DIRECTIVE POUR LA MACHINERIE 73/23/EC DIRECTIVE POUR BAS VOLTAGE (n'est applicable qu'aux produits utilisant l'énergie électrique)</p>	<p>SE FÖRSÄKRAN OM ÖVERENSSTÄMMELSE VI, TRELAWNY SPT LIMITED FÖRKLARAR ATT VI MED ENSAMT ANSVAR ANSKAFFAT / TILLYERKAT PRODUKTEN PRODUKTNAMN MODELL och SERIE NUMMER Tillverkningsår TILL VILKEN DETTA DOKUMENT HÄNVISAR ÄR I ÖVERENSSTÄMMELSE MED FÖLJANDE DIREKTIV, NORMATIVA DOKUMENT OCH DERAS RELEVANTA STANDARDER 98/37/EC MASKINDIREKTIV 73/23/EC LÅGSTRÖMSDIREKTIV (TILLÄMPLIG PÅ ELEKTRISK DRIVNA PRODUKTER)</p>
<p>GR ΔΗΛΩΣΗ ΠΙΣΤΟΤΗΤΑΣ Η εταιρεία Trelawny Spt Limited Δηλώνει ότι έχει τη μοναδική ευθύνη ως κατασκευαστής / προμηθευτής του παρακάτω προϊόντος περιγραφής μοντέλο, αριθμός σειράς έτος παραγωγής και στο οποίο αναφέρεται αυτή η δήλωση, είναι σύμφωνο με τις προδιαγραφές που ορίζονται στις ακόλουθες Κοινοτικές Οδηγίες Ηλεκτρικές Διατάξεις κι άλλες σχετικές προδιαγραφές 98/37/EC ΟΔΗΓΙΑ ΠΕΡΙ ΜΗΧΑΝΗΜΑΤΩΝ 73/23/EC ΟΔΗΓΙΑ ΠΕΡΙ ΧΑΜΗΛΗΣ ΤΑΣΗΣ (αφορά μόνον προϊόντα που λειτουργούν με ηλεκτρικό ρεύμα)</p>	<p>SI IZJAVA O SKLADNOSTI Trelawny SPT Limited pod polno odgovornostjo izjavljamo, da so spodaj navedeni proizvodi, ki jih dobavljamo/proizvajamo: Ime proizvoda Model, serijska številka Leto proizvodnje na katere se ta dokument nanaša, proizvedeni v skladu z določili naslednjih direktiv, normativnih dokumentov in njihovih relevant- nih standardov: 98/37/EC DIREKTIVA O STROJIH 73/23/EC DIREKTIVA O STROJIH Z NIZKO VOLTAŽO (nanaša se samo na proizvode na električni pogon)</p>
<p>HU MEGFELELŐSÉGI NYILATKOZAT Mi, A "Trelawny SPT Limited" cég Felelősségünk tudatában kijelentjük, hogy mint a termék szállítója/gyártója Termék neve Típus, Sorozatszám Gyártási év amelyre jelen dokumentum vonatkozik, megfelel az alábbi Irányelv(ek), Irányadó Dokumentumok előírásainak, és az azokat meghatározó szabványoknak: 98/37/EC GÉPÉSZETI IRÁNYELVEK 73/23/EC KISFESZÜLTÉGŰ IRÁNYELVEK (Csak az elektromos meghatározású gépeknél)</p>	<p>TR UYGUNLUK BEYANI Trelawny SPT Limited Aşağıdaki, üretim ve tedarikinden tek başına sorumlu olduđu ürünün Ürün adı Model/Seri no Üretim yılı bu belgenin ilgili olduđu aşağıdaki yönetmeliklerin, norm belgelerinin ve ilgili standartlarının koşullarına uygun olduđunu beyan eder: 98/37/EC MAKÝNALAR YÖNETMELÝĐÝ 73/23/EC DÜĐÜK GERÝLÝM YÖNETMELÝĐÝ (Yalnız elektriklere çalyban ürünlerde geçerlidir)</p>
<p>IT DICHIARAZIONE DI CONFORMITA La Società Trelawny SPT Limited Dichiara, sotto la propria responsabilità, che la fornitura / produzione del prodotto Nome prodotto Modello, codice Anno di produzione a cui si riferisce tale documento è conforme alle seguenti Direttive, ai documenti della Normativa ed ai relativi standard: 98/37/EC DIRETTIVA SULLE APPARECCHIATURE 73/23/EC DIRETTIVA SUL BASSO VOLTAGGIO (applicabile esclusivamente per i prodotti che utilizzano energia elettrica)</p>	

GENERAL INFORMATION

Thank you for your purchase of the Trelawny TFS230 Floor stripper. Before operating the TFS230 this manual must be read and understood by the operator, if in any doubt ask your supervisor before using this equipment. Failure to follow these instructions could result in damage to the TFS230 and/or personal injury.

Trelawny SPT Ltd disclaims all responsibility for damage to persons or objects arising as a consequence of incorrect handling of the tool, failure to inspect the tool prior to starting work for damage or other faults that may influence the operation or safe working of the tool, or failure to follow the safety regulations listed or applicable to the job site.

The machine is primarily designed for the removal of bonded carpet, vinyl, linoleum, cork, and other floor covering. It can be used for removal of compacted soil from forklift truck areas or solidified printing ink etc.

Operators should be familiar with the data given in the specification section. Please keep these instructions in a safe and accessible place.



WARNING! Before operating or performing maintenance the TFS230 Floor Stripper this manual must be read and understood. If in any doubt, ask your supervisor before using this equipment.

SAFETY

DO -

Wear Personal Protective Equipment (PPE) including safety goggles, footwear, ear defenders and gloves. In some environments it will be necessary to wear face masks or breathing apparatus.

Be aware that this tool can create dust and flying debris.

Be aware of others working around you.

Keep hands, feet and clothing away from moving parts, there exists a risk of pinch, crush or shear injury.

All points are highlighted with symbols (see page 15)

Store this tool in a secure and dry environment.

Ensure that the workplace is well ventilated. Avoid using a fuel powered generator in an enclosed area, since engine exhaust gases are poisonous.

DO NOT -

Intervene into the cutting zone when in operation.

Leave unattended on uneven surfaces - check wheels for safety.

Allow the tool to run unattended.

Modify this tool in any way, as this will invalidate the warranty and could lead to serious injury.

Use this tool in potentially explosive environments.

Use petrol (gasoline), thinners or any other high flash point solvent to clean the tool.

Disassemble or repair unless Trelawny trained.

Return to base repair advised.

Repetitively restart motors, **this will potentially damage the motor.** Leave a Minimum 15 seconds duration between starts and no more than 4 restarts in a minute.

WEAR SAFETY BOOTS, FACE MASK, SHATTERPROOF GLASSES, HELMET, GLOVES, and any other personal protective equipment required for the working conditions. Avoid loose clothing; this may become trapped in moving parts and cause serious injury.

ENSURE THAT THE WORKPLACE IS WELL VENTILATED.

DO NOT OPERATE ELECTRIC EQUIPMENT IN WET CONDITIONS.

CAUTION THIS MACHINE IS HEAVY.

It weighs 48kg / 105lbs. Do not lift this machine manually assisted lift required.

BEWARE OF MOVING BLADE.

Serious injury could occur if the stripper blade is brought into contact with body parts during operation.

INSPECT MACHINE FOR DAMAGE PRIOR TO USING.

Ensure all graphic warnings, cables and electricals are visibly undamaged and intact prior to use.

BEWARE OF HOT SURFACES

Use appropriate PPE for protection.

REMOVE BLADE WHEN IN TRANSIT.

PLACE IN LOW POSITION FOR TRANSIT.

HANDLING OF THE BLADE.

The blade is sharp at all times, use of gloves is mandated. Do not lift the machine by the blade. If the blade becomes lodged use a gripping tool, such as pliers to dislodge it. **DO NOT** attempt to remove it by hand.



WARNING! Always observe safe-working practices and local safety regulations at all times.

RISK OF HAND-ARM VIBRATION INJURY

These tools may cause Hand-arm Vibration Syndrome injury if their use is not adequately managed.

We advise you to carry out a risk assessment and to implement measures such as limiting exposure time (i.e. actual trigger time, not total time at work), job rotation, ensuring the tools are used correctly, ensuring the tools are maintained according to our recommendations, and ensuring that the operators wear personal protective equipment (PPE) particularly gloves and clothing to keep them warm and dry.

Employers should consider setting up a programme of health surveillance to establish a benchmark for each operator and to detect early symptoms of vibration injury.

We are not aware of any PPE that provides protection against vibration injury by attenuating vibration emissions.

See 'Specifications' section for vibration emission data.

Further advice is available from our Technical Department.

We strongly advise you to visit the Health & Safety Executive website <http://www.hse.gov.uk/vibration>. This site provides excellent advice and information on HAV and currently, includes a Hand-arm Vibration Exposure Calculator that is easy to use to work out the daily vibration exposure for each of your operators.



FOR HAZARD, RISK, PPE SYMBOL DEFINITIONS
SEE TABLE ON PAGE 15

ASSEMBLY INSTRUCTIONS

There are three main parts:

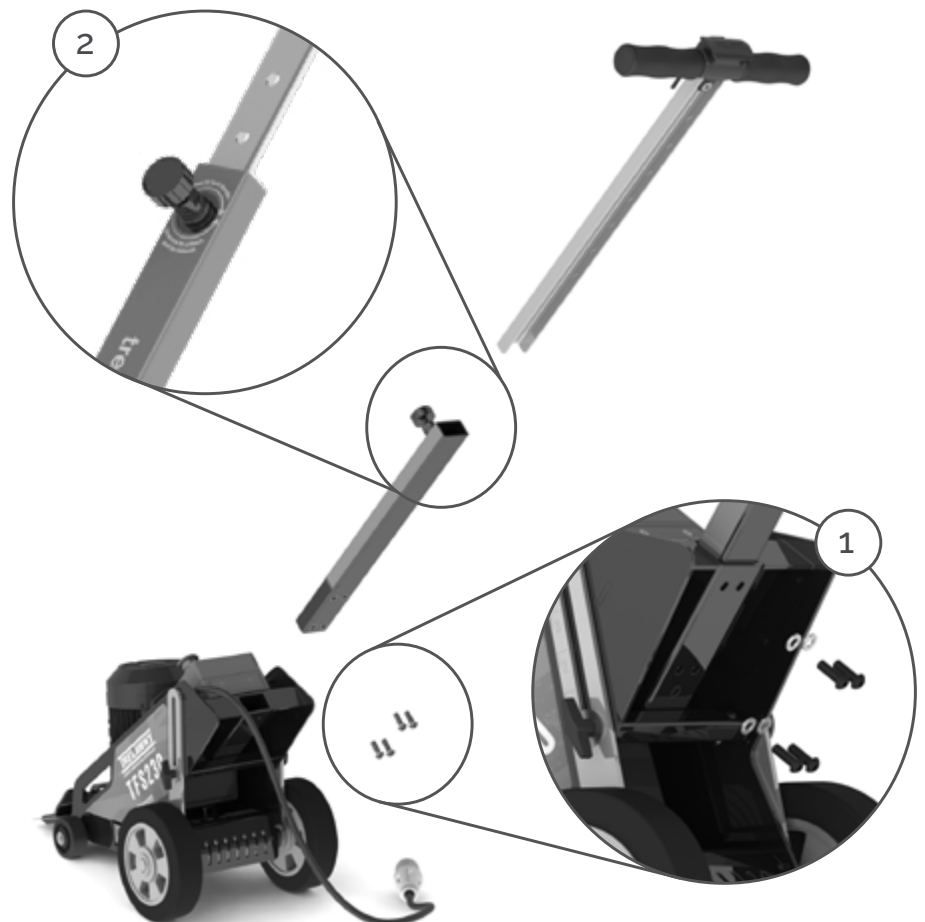
- Main body
- Lower handle
- Upper handle

STEP 1

Fit lower handle to main body with 4 bolts and washers. Fit all four bolts loosely first, then tighten fully.

STEP 2

Pull the knob on lower handle and slide upper handle into lower handle tube. Secure by turning knob until upper handle is securely clamped in place.



PRE START CHECKS (DAILY)

- Check all bolts and screws for tightness. Ensure that all fittings are secure.
- Check condition of blade, blade attachment, blade mechanism and replace components as required.

Electric Models

The TFS230 is supplied with a specially commissioned electric motors and starter box assembly. Each unit is fully tested and set according to the manufacture's specifications. In the event of malfunction on a new machine, the owner should first check that the power supply on site is suitable and adequate. All cables should be fully uncoiled and never left wrapped around cable reels or tied in loops. The starter box is fitted with a safety feature to protect the motor and from damage. The starter boxes are pre-set and under no circumstances should they be tampered with, stripped down or adjusted, this will invalidate the warranty. The starter control box must only be accessed by a fully trained person or electrically qualified engineer.

110v Motor

Use a centre tap transformer with a continuous rated output of 5.0KVA and must be a 230v 20amp supply. Do not add an extension lead to the transformer input. Do not use a 230v 13amp domestic supply. The motor requires the minimum of a 32amp, 110v power supply. The 110v machine requires the use of 4mm² extension cable up to a maximum of 20 metres, as it draws a significant operating current. The use of 2.5mm² for 110v machines is not recommended and can cause operating problems, particularly in conjunction with poor supplies, where excessive voltage drops will be encountered and damage to the machine may occur.

230v Motor

Take particular care when using 230v Machines, ensure that the electrical supply is earthed, and that breakers and fuses are correct for the loading. The 230v motor requires the minimum of a 13amp, 230v power supply. Always use the shortest possible length of extension cable. To avoid Voltage drop Trelawny recommends a maximum cable length of 40m with a core wire size of 4mm² cross sectional area.

STARTING - ELECTRIC MOTORS

Inspect the supply cable; Check that no damage has been caused to the outer casing and that there are no exposed or loose wires. Obtain the assistance of an electrician if a fault is found. Do not use the machine until it has been rectified. Check that the cable is not running across sharp or jagged edges and that it is not in contact with any liquid.

STEP 1

Adjust stripping angle and handle height as required.

STEP 2

Plug the supply cable into the inlet plug, ensure blade is free to move, and clear of any flooring material.

STEP 3

Press the green button and the motor will start.

STEP 4

To stop press the red button.

STEP 5: If the isolator will not turn on, unplug the supply cable, and press the small white button on the starter box side, this resets the overload in the motor breaker, then plug the supply cable back in to operate.

IMPORTANT! Allow 15 seconds after shutting off before turning the motor on again.



HANDLE ADJUSTMENT

Adjust handle up and down by unscrewing the knob and pulling it out slightly and sliding the upper handle to the desired height. Secure it after you set the handle height.

STEP 1

Loosen the knob by following the instructions and pull.

STEP 2

Set the handle height to a desired height.

STEP 3

Secure the knob after setting height by following the instructions.



BLADE REPLACEMENT

Loosen the three Allen screws on top of the blade holder which clamp the blade in position, remove blade holder and replace the blade. Replace the holder, replace and tighten the retaining screws.

STEP 1

Ensure machine is switched off and isolated from power supply.

STEP 2

Loosen the three Allen screws on top of the blade holder. **(DO NOT REMOVE COMPLETELY)**

STEP 3

Remove blade holder.

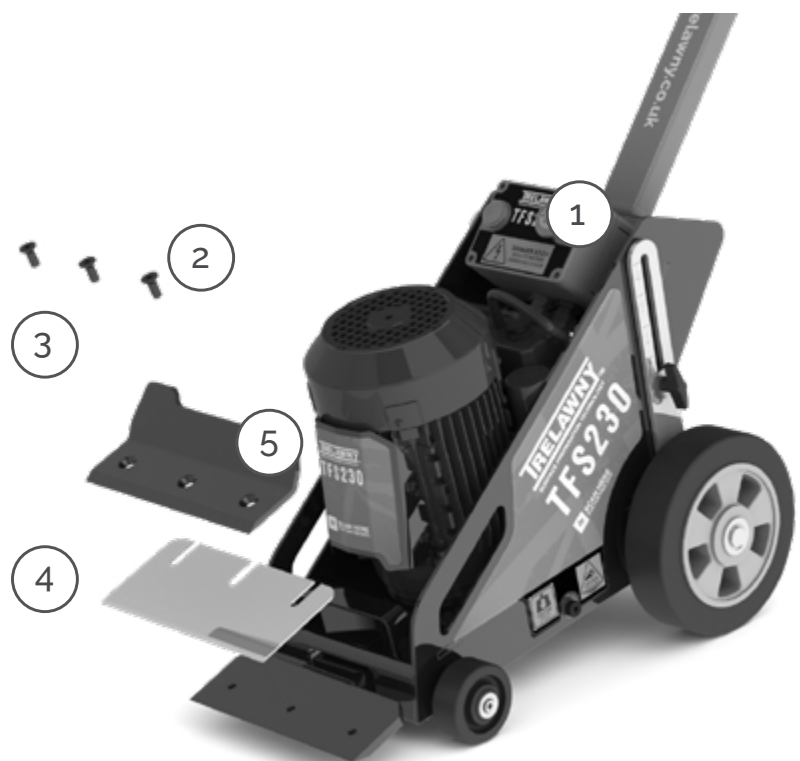
STEP 4

Replace blade.

STEP 5

Secure the blade holder back into place and tighten screws.

CAUTION: BLADES ARE SHARP!
Observe PPE & safety precautions when changing blades.



BLADE ANGLE ADJUSTMENT

STEP 1

Loosen (do not remove) the T-handle on the left side of the TFS230, located above the back left hand wheel.

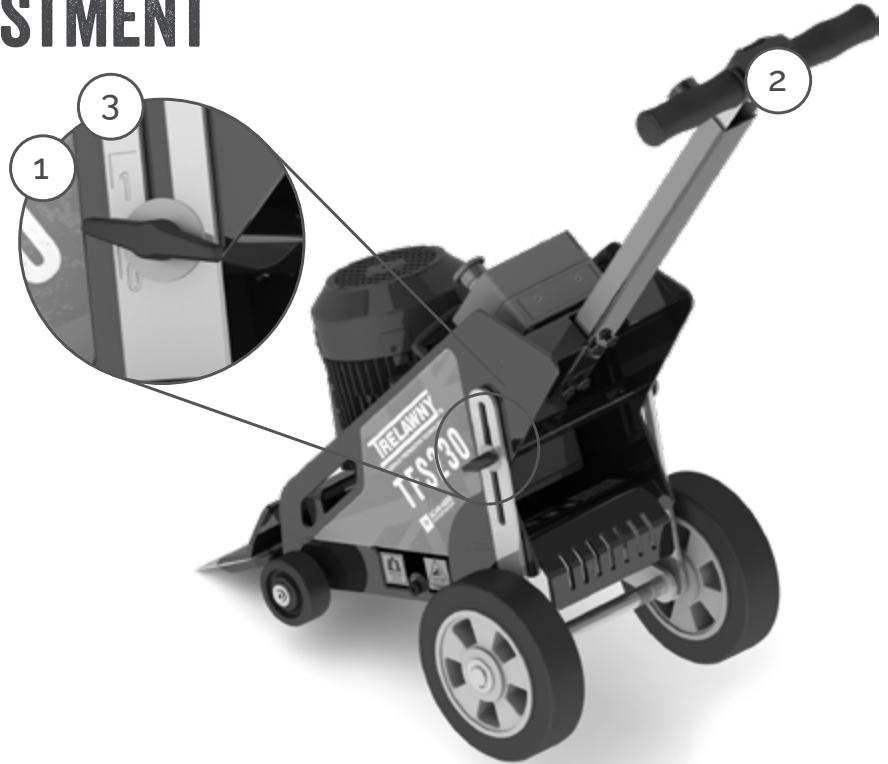
STEP 2

Lift handle upwards (rear wheels should remain on the ground).

STEP 3

When you reach the required angle tighten the T-handle firmly.

NOTE: use the minimum angle required for your flooring material/application.



PPE AND WARNING HAZARD SYMBOLS EXPLANATION

SYMBOL / WARNING	DESCRIPTION
	Always read the manual.
	Wear protective glasses.
	Wear ear defenders.
	Wear protective shoes.
	Wear protective gloves.

SYMBOL / WARNING	DESCRIPTION
	Caution assisted lift only.
	Caution crush point.
	Caution pinch point.
	Danger 110V.
	Danger 230V.

MACHINE OPERATION

1. Before starting the motor, increase the "angle of attack" of the blade to the desired level until the blade makes contact with the underside of the surface to be stripped. Ensure the blade is NOT in contact with the target surface before starting the machine.

2. Manually remove any nails, studs, pins, rebar etc. from the area to be stripped before starting work. Attempting to strip with such items in place will damage the blade and/or machine.

3. For large area vinyl floors or large carpet areas use a knife score the material into strips of approximately same width as TFS blade before starting work.

4. Complete a small area observing the performance; angle of attack, inspect the finish produced.

DO NOT ADJUST THE BLADE ANGLE WHILST THE MACHINE IS IN OPERATION.

5. Remember let the machine do the work before exerting excess pressure through the handle or foot plate. Light passes are quicker and more cost effective than one slow heavy pass. Tests have proved conclusively that heavy downward pressure reduces blade life and increases risk of "sticking" under the target surface by over 50%.

6. Avoid metal objects lodged in the floor as this will cause damage to the machine.

DO NOT use the above method if the floor is wet or damp due to the inherent danger of the water ingress.

NOTE: Electrical motors and switches are not totally waterproof; but are protected to IP44; take special care to protect them from water to ensure safety.

7. The TFS230 is designed to be used in a forward motion; the oscillation of the blade also helps with the operation. The operator can vary the speed of travel and angle of adjustment to determine the final finish.

8. In an emergency, when the blade must be lifted quickly from the work surface, it is not necessary to turn off the machine, simply tilt backwards on the handlebar to lift the front wheels off the floor.

9. DO NOT move the machine around the work area tilted to the rear, with the blade in the air, without a blade protector in place. The risk of shin injury to persons in the workspace is high.

10. DO NOT leave the machine connected and unattended at any time. Ensure the blade protector is in place at all times when not in use.

11. PPE must be worn at all times.

MAINTENANCE AND MACHINE STORAGE

- After use, clean the machine to remove all build up of dust and surface residues. If using a hosepipe or pressure washer take care not to direct water at electrical components and switches.

NOTE: Motors and switches are not waterproof.

- Daily check the drive elements for build up of deposits and any trapped debris etc. Check the underside for damage.

- Serious damage could result to the drive shaft, bearings and drive motor if the blade mechanism is obstructed.

WARNING: Never operate the TFS230 without the machine being flat on the ground. All fastenings should be checked daily for tightness and tension.

Check the individual motor manufacturer's instructions for details on their service recommendations.

Short period storage: up to 3 months

- Clean outside of machine, inspect the moving parts for wear; replace any worn parts as required.

- Remove any build up of material from inside the mechanical area.

- Cover the machine to protect it: Store the machine in a dry place. Be sure to check security of all fastenings after any lay up period. See also motor manufacturer's operation and maintenance instruction book.

Long period storage: over 3 months

- Clean the outside of the machine, inspect for wear; replace any worn parts as required.

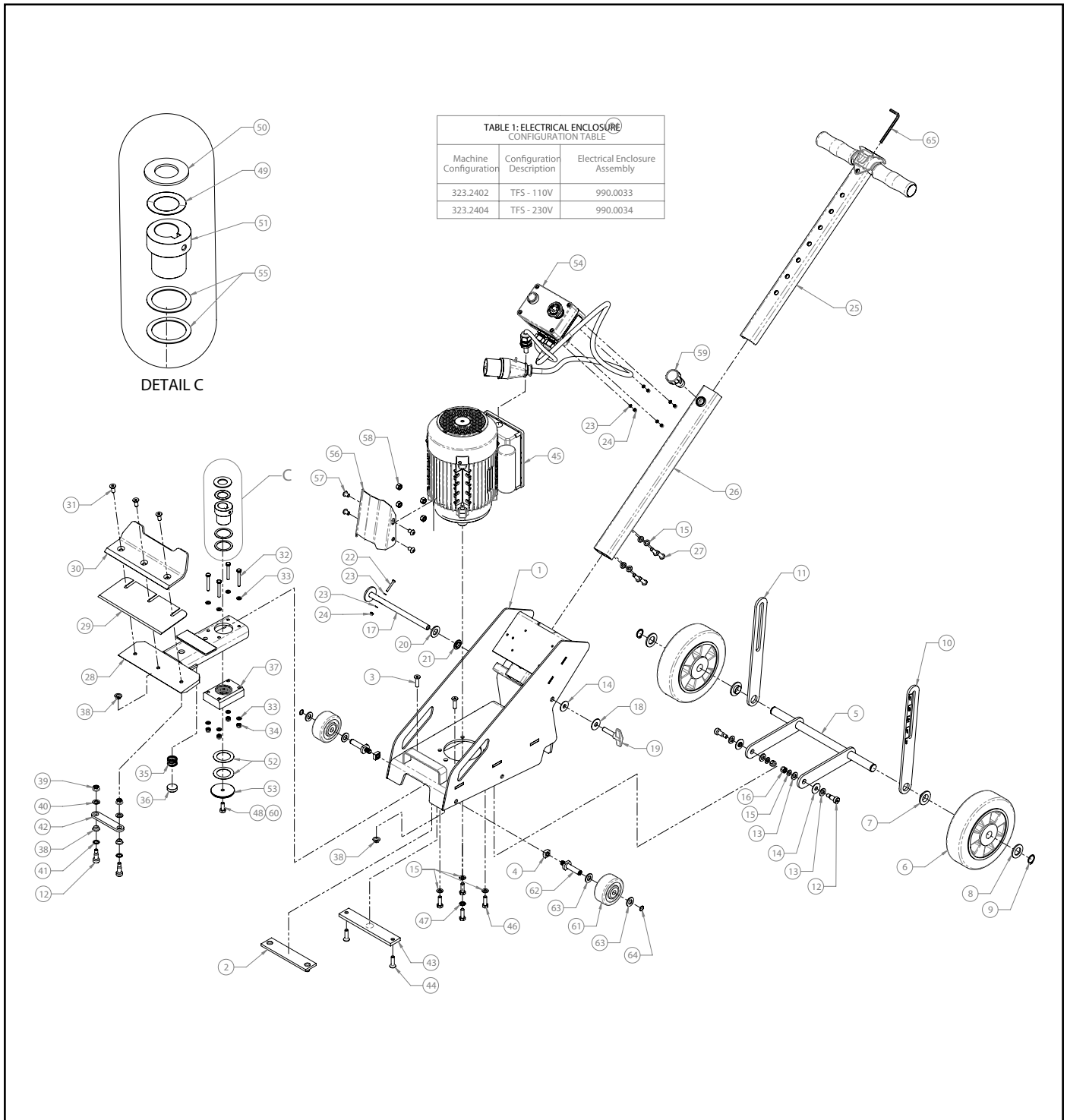
- Remove any build up of material from inside the mechanical area.

- Cover the machine to protect it: Store the machine in a dry place.

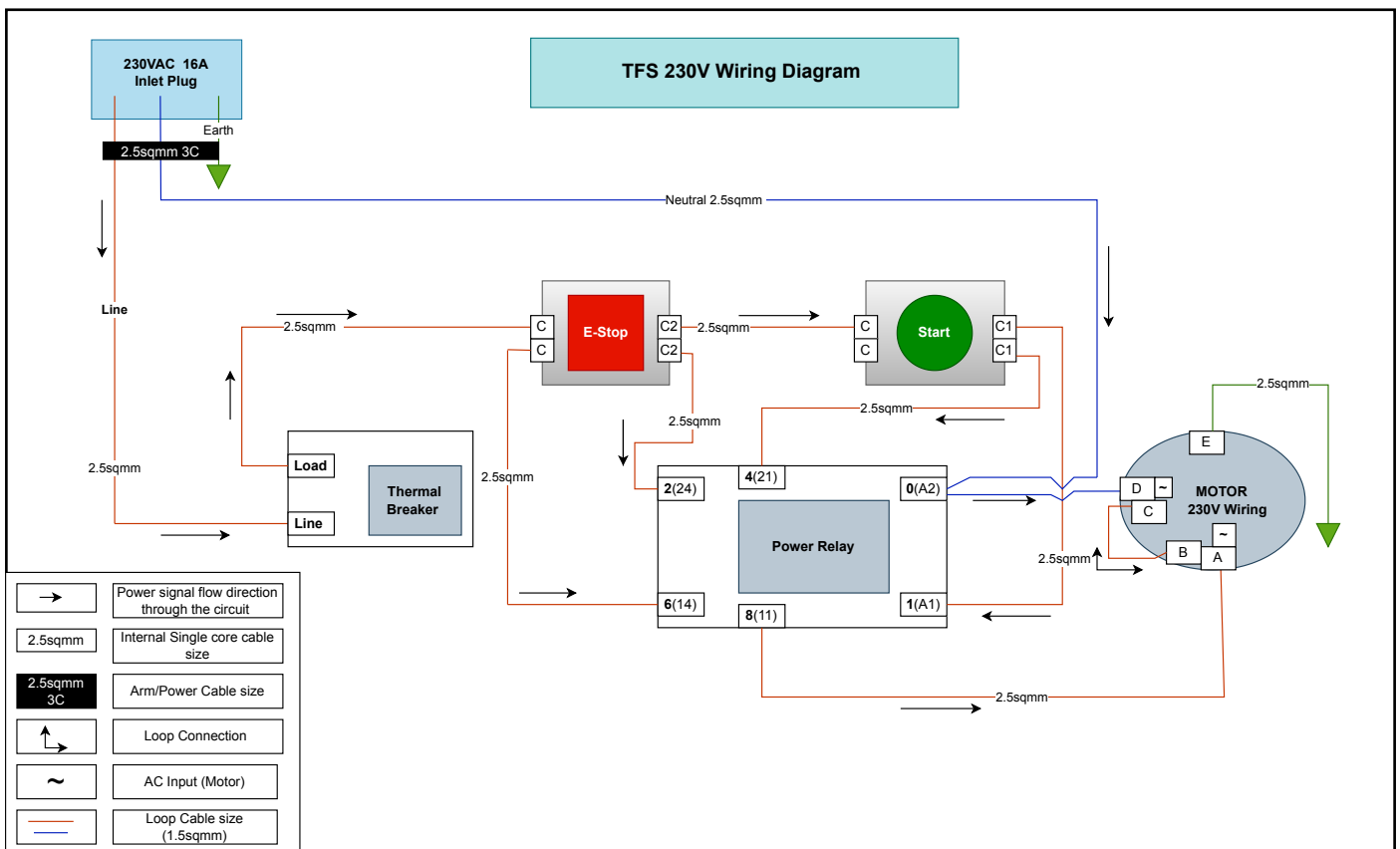
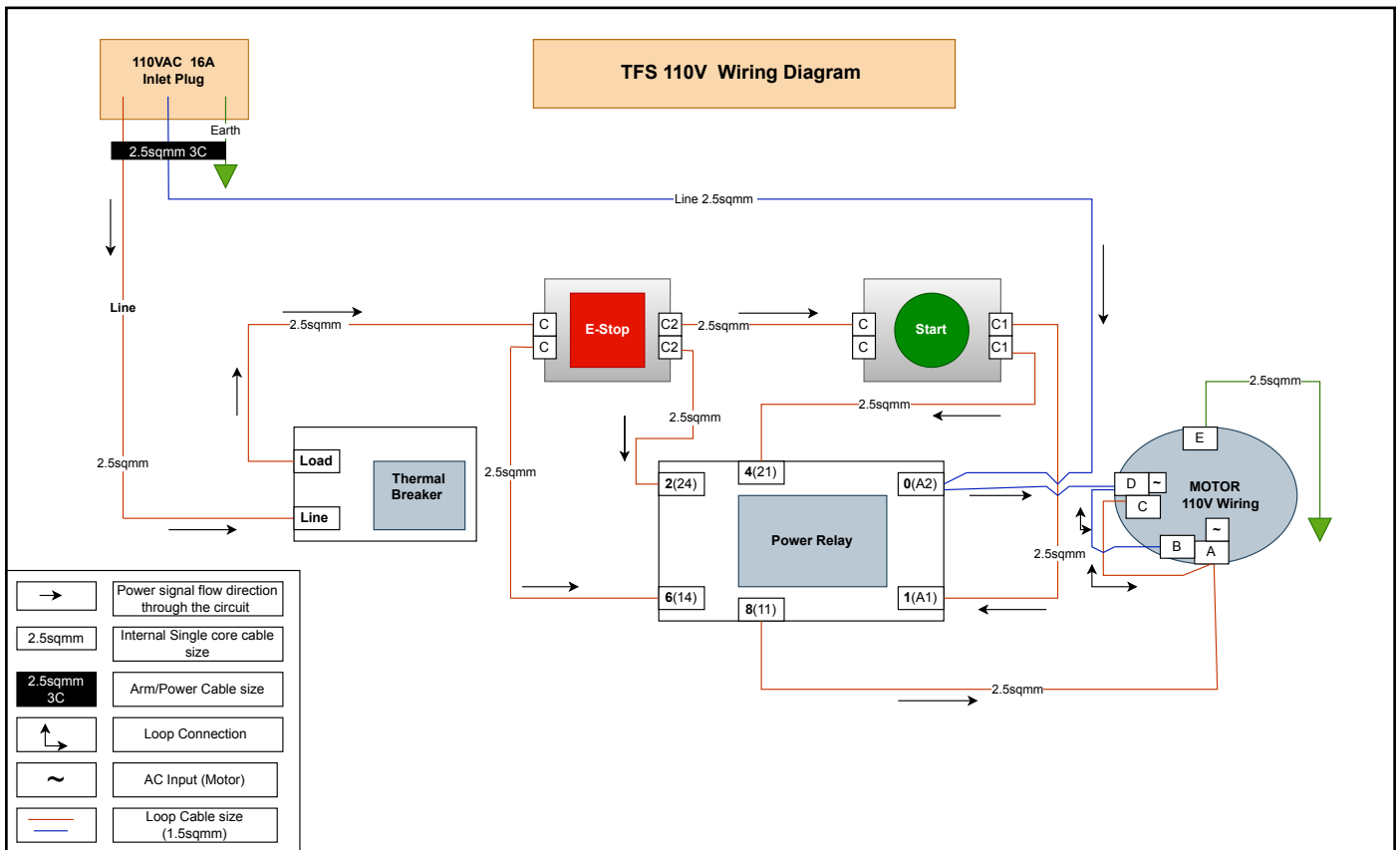
- After any long lay up period be sure to check the security of all fastenings.

- Ensure blade is removed and stored safely whenever the machine is transported.

EXPLODED VIEW



WIRING DIAGRAMS



PARTS LIST TFS230

ITEM NO.	PART NO.	DESCRIPTION
1	990.0011	TFS - Chassis Metalwork Assy 1
2	990.0035	TFS - Stripper Arm Wear Strip Assembly 1
3	853.0830	M8 x 30mm CSK Socket Head Screw 2
4	875.1270	M10 Square Nut (DIN 557) 2
5	990.0014	TFS - Rear Wheel Linkage Assembly 1
6	350.9121	Wheel 200 GRSH 2
7	875.1195	Shoulder Washer 20mm X 21.9mm X 6mm - Black Nylon
8	812.1001	20mm Plain Washer 2
9	814.1020	Circlip (Ext.) 20mm x 1.2 2
10	990.1041	TFS - Rear Wheel Height Linkage LH 1
11	990.1075	TFS - Rear Wheel Height Linkage RH 1
12	875.1187	M8 (10mm) X 16mm Socket Shoulder Screw 4
13	812.0710	M10 Washer zinc plated 4
14	875.1193	Shoulder Washer 10.2mm X 12.5mm X 2.5mm - Black
15	812.1080	M8 Plain Washer 9
16	824.0800	M8 Nylock Nut 2
17	990.0020	TFS - Height Adjustment Threaded Tube Metalwork A
18	812.2010	M10 Mudguard Washer
19	857.1010	Wing Screw M10 x 40mm 1
20	875.1216	M16 x 30 x 3.0mm Form A Nylon Washers, Black 1
21	875.1194	Shoulder Washer 14.2mm X 17.8mm X 2mm - Black Ny
22	875.1293	M4 x 30mm Hex Head Machine Screw, Mild Steel, Bl
23	812.1040	Washer, M4 6
24	875.1215	M4 Nyloc Hex Nut 5
25	990.0024	TFS - Central Handle Upper Assy 1
26	990.0019	TFS - Central Handle Mid Sleeve Assy 1
27	875.1219	M8 x 25mm Hex Socket Button Screw, Black 4
28	990.0017	TFS - Stripping Head Metalwork Assembly 1
29	323.3509	A 230mm Blade TFS 230 1
30	990.1059	TFS - Stripping Head Blade Plate Upper 1
31	875.1199	M8 x 20 Countersunk Machine Screw
32	875.1290	M6 x 45mm Hex Head Bolt 4
33	812.1060	M6 Plain Washer 8
34	824.0600	M6 Nyloc Nut 4
35	875.1226	Compression Spring
36	875.1198	Disc Bearing 1
37	990.0037	TFS - Stripper Arm HK Bearing Housing Assembly 1
38	875.1188	Polymer Flanged Bush 10mm x 12mm x 7mm
39	875.1287	M8 Hex Nut (Flanged) 2
40	875.1248	Polymer Thrust Washer 10mm x 18mm x 1.0mm
41	875.1288	Shim Washer, Carbon Steel 10mm x 16mm x 1.0mm 2
42	990.1052	TFS - Stripping Head Pivot Arm 1
43	990.1051	TFS - Stripper Arm Brace Bar 1
44	853.0830	M8 x 30mm Socket Head Screw
45	875.1283	Electric Motor 11kW, (Dual Voltage)
46	831.0825	M8 x 25mm Hex Head Machine Screw 4
47	811.1008	M8 Shakeproof Washer 1
48	831.0820	M8 x 20mm Hex Head Machine Screw 1
49	875.1242	Disc Spring - 25.5mm x 39.6mm x 0.5mm
50	875.1303	M24 Pin Washer, Steel
51	990.1060	TFS - Stripper Arm Eccentric Bushing 1
52	875.1246	Thrust Washer AS
53	875.1196	M8 x 60mm x 4.0mm Penny Washer 1
54	990.0033	TFS - Emergency Stop Enclosure Assembly
55	875.1280	Shim Washer, Carbon Steel 35mm x 45mm x 1mm 2
56	990.1093	TFS - Motor Shield
57	852.0812	M8 x 12mm Button Head Machine Screw 4
58	320.9226	M8 Full Hex Nut 4
59	323.9104	Threaded Clamping Spring Plunger 1
60	875.1300	Threadlock - Medium Strength
61	320.9120	TFP200 Front Wheel 2
62	990.1076	TFS - Front Wheel Stub Axle
63	812.0712	M12 Washer zinc plated
64	875.1295	Single Turn Spiral Retaining Ring - 12mm External
65	805.0501	Allen Key 5mm Hex 1

TECHNICAL SPECIFICATION

Length x Width x Height (inc extended handle and wheels)	100mm x 86mm x 35mm	39.5" x 34" x 13.5"
Blade Width	230mm	7"
Weight	48kg	105lbs
Electric Motors		
Power	11Kw	15hp
RPM	1425	
Voltage / Amperage / Frequency	115VAC / 17Amp / 50Hz	230VAC / 8.5Amp / 50Hz
Noise Emission (accordance with EN ISO 15744: 2008 and ISO 3744:2010)		
Noise Level:		
lpa	82dpa	
Vibration Emission (measured in accordance with EN ISO 20643:2005)		
Vibration (AEQ) at handle: (k ²)	11.5m/s ² (k - 0% +40%)	

(k²) Equals the factor of uncertainty, which allows for variations in measurement and production. Vibration Data figures are tri-axial, which gives the total vibration emission. Because of various factors, the range of vibration emission during intended use can vary. The vibration is dependent on the task, the operators grip, and feed force employed etc.

TROUBLESHOOTING

FAULT	POSSIBLE CAUSE	ACTION
Electric motor will not start.	Insufficient supply voltage.	Check supply voltage with within specifications.
		Check transformer (if present) is of recommended specification and functioning correctly.
		Check transformer (if present) thermal trip hasn't activated. Wait and reset if applicable.
		Check Cable extension length is within specified limits and/or cross section is equal or over size. Refer to Manual
	Stripping head jammed.	Ensure machine is clear of all flooring and other media before starting.
	Thermal safety trip has activated.	Wait until machine has cooled down (approx 30mins), press the reset button on the side of the electrical enclosure, then attempt restart. If the issue persists, contact customer support.
Electric motor stops during use.	Motor stalled.	Ensure machine is clear of all flooring and other media before restarting. If the issue persists, contact customer support.
	Thermal safety trip has activated.	Wait until machine has cooled down (approx 30mins), press the reset button on the side of the Electrical Enclosure, then attempt restart. If the issue persists, contact customer support.
Stripping head not removing material effectively	Blade blunt/damaged/clogged.	Inspect stripping blade. Carefully clean or replace blade if required.
	Blade incorrectly installed.	Check blade installation for squareness & tightness. Blade should have bevel facing up for most flooring media.
	Incorrect/inefficient stripping head angle.	Adjust stripping angle as required. Use the minimum angle possible for media to be removed.
	Stripping sheet materials, such as vinyl or carpet.	Use a knife to score the material into strips of approximately same with as TFS230 blade before starting work.
	Eccentric bearing failure.	Replace.
Unexpected noise/rattling.	Motor/drivetrain wear.	Switch off & Isolate power to machine. Carefully inspect motor & free-moving parts.
	Worn or loose fixings/fasteners.	Switch off & isolate power to machine. Carefully inspect fixings, pivots etc. tighten any loose fasteners.

THE PERFECT FINISH
STARTS WITH
TRELAWNY



DEALER STAMP:



NEED TO CONTACT US?

Trelawny SPT Limited

Trelawny House, 13 Highdown Road, Sydenham Industrial Estate,
Leamington Spa, Warwickshire, CV31 1XT, United Kingdom

Telephone: +44 (0)1926 883781 Fax: +44 (0)1926 450352

Email: sales@trelawny.co.uk

Website: www.trelawny.co.uk

Manual Part Number:
735.5230

